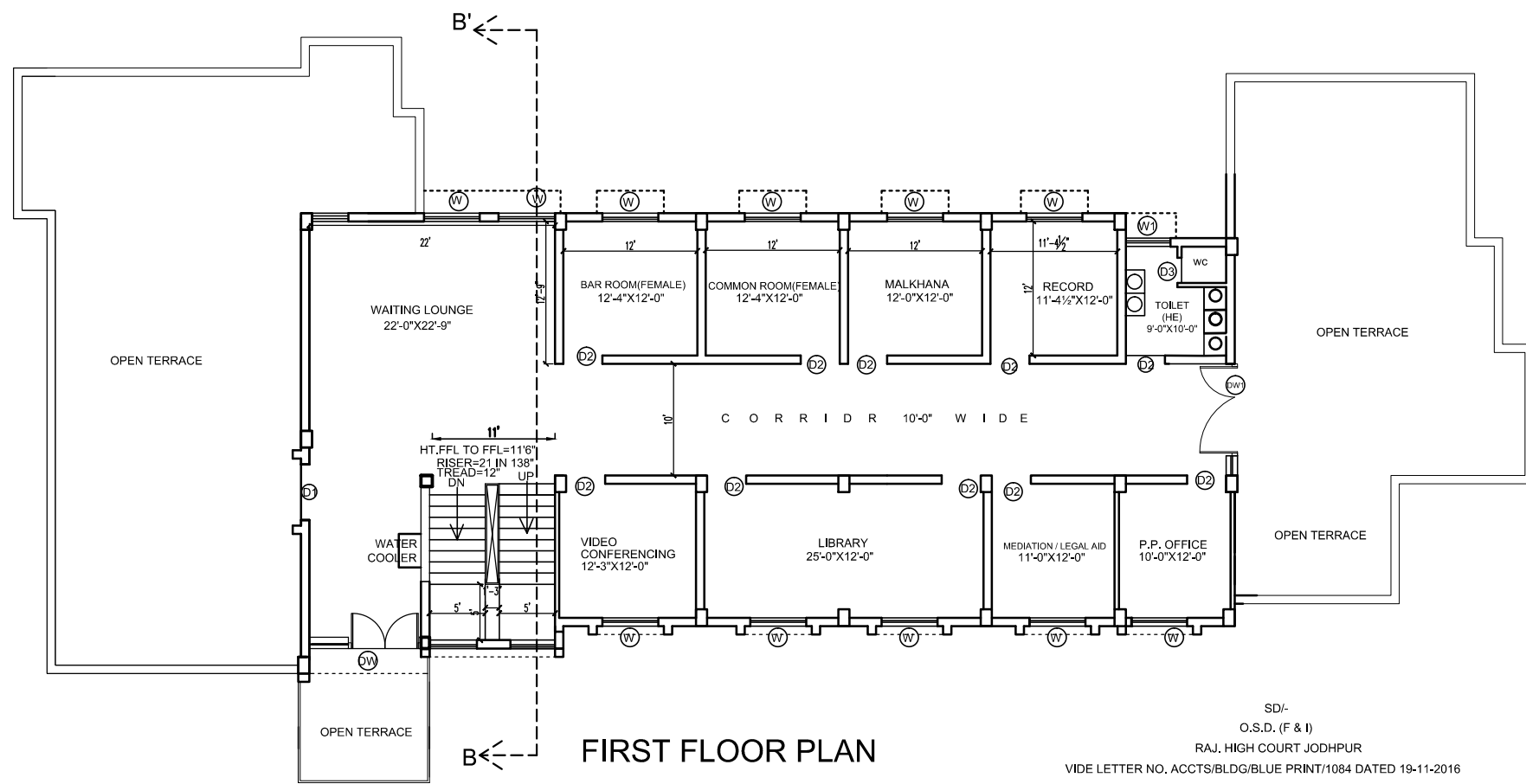


GROUND FLOOR PLAN (SINGLE COURT)



FIRST FLOOR PLAN

SD/-
O.S.D. (F & I)
RAJ. HIGH COURT JODHPUR
VIDE LETTER NO. ACCTS/BLDG/BLUE PRINT/1084 DATED 19-11-2016

DOOR/ WINDOW / VENTS SCHEDULE

S.NO.	SIGN	WIDTH	SILL	LINTEL	REMARK
1	DW	10'-0"	0'-0"	9'-0"	ALUMINIUM GLASS SHUTTER
2	DW1	8'-0"	0'-0"	9'-0"	ALUMINIUM GLASS SHUTTER
3	D1	5'-0"	0'-0"	9'-0"	TEAK WOOD DOUBLE LEAF FLUSH DOOR
4	D2	3'-6"	0'-0"	9'-0"	TEAK WOOD SINGLE LEAF FLUSH DOOR
5	D3	2'-6"	0'-0"	9'-0"	TEAK WOOD PANLED DOOR
6	MSDW	6'-0"	0'-0"	9'-0"	MS DOORCUM WINDOW WITH 20MM # BAR AS/ JAIL MANUAL
7	D3A	2'-6"	0'-0"	9'-0"	DOOR HT. 4'8" ONLY AS/ JAIL MANUAL
8	W	5'-0"	3'-0"	9'-0"	PARTLY FIXED/PARTLY OPENABLE STEEL GLASS WINDOW
9	W1	4'-0"	3'-0"	9'-0"	PARTLY FIXED/PARTLY OPENABLE STEEL GLASS WINDOW
10	W3	3'-0"	3'-0"	9'-0"	PARTLY FIXED/PARTLY OPENABLE STEEL GLASS WINDOW
11	W3A	3'-0"	5'-0"	9'-0"	PARTLY FIXED/PARTLY OPENABLE STEEL GLASS VENT
12	V1	3'-0"	7'-0"	9'-0"	VENT WITH 20MM MS BAR & 7'X7" JALI ON BOTH SIDES AS/ JAIL MANUAL
13	V2	2'-0"	7'-0"	9'-0"	VENT WITH 20MM MS BAR & 7'X7" JALI ON BOTH SIDES AS/ JAIL MANUAL
14	WS	4'-0"	-	-	PARTLY FIXED/PARTLY OPENABLE STEEL GLASS WINDOW (STAIR CASE)

NOTE:-

BUILTUP AREA(G.F.)— 5776.00 SQFT
BUILTUP AREA(F.F.)— 3119.00 SQFT
TOTAL BUILTUP AREA—8726.00 SQFT.

DINESH SHARMA
CHIEF ARCHITECT

U.S.NANDI WAL
SENIOR ARCHITECT

SANDEEP SARIN
DEPUTY ARCHITECT

DEVESH MATHUR
ASSISTANT ARCHITECT

TRACED BY	GOPAL SAINI	M.P.MATHUR
	DEALT BY	CHECKED BY

NAME OF PROJECT:

PROPOSED COURT BUILDING(T.D.) FOR ADDL. DISTRICT & SESSION JUDGE, SPECIAL JUDGE (SC/ST), CIVIL JUDGE CUM J.M.(JR.DIV.) CIVIL JUDGE CUM A.C.J.M.(SR.DIV.)

NAME OF DRAWING

GROUND FLOOR PLAN & FIRST FLOOR PLAN (REVISED)

PROJECT No. TD/J/1	DRAWING No.
--------------------	-------------

DIRECTION:	SCALE:	DATE:
	N.T.S.	26.10.2016

PUBLIC WORKS DEPARTMENT
GOVT. OF RAJASTHAN, JAIPUR