

DOOR / WINDOW / VENTS SCHEDULE

S.NO.	SIGN	WIDTH	SILL	LINTEL	REMARK
1	DW	6'-9"	0'-0"	9'-0"	ALUMINIUM GLASS SHUTTER
2	DW1	10'-3"	0'-0"	9'-0"	ALUMINIUM GLASS SHUTTER
3	D1	6'-0"	0'-0"	9'-0"	TEAK WOOD DOUBLE LEAF FLUSH DOOR
4	D2	3'-6"	0'-0"	9'-0"	TEAK WOOD SINGLE LEAF FLUSH DOOR
5	D3	2'-6"	0'-0"	9'-0"	TEAK WOOD PANLLED DOOR
6	W	7'-0"	0'-0"	9'-0"	DOOR HT. 48" ONLY
7	W1	5'-0"	3'-0"	9'-0"	PARTLY FIXED/PARTLY OPENABLE STEEL GLASS WINDOW
8	W2	6'-0"	3'-0"	9'-0"	PARTLY FIXED/PARTLY OPENABLE STEEL GLASS WINDOW
9	VI	2'-0"	5'-0"	9'-0"	VENT WITH 20MM MG BAR & 17X1" JALI ON BOTH SIDES AS/ JAIL MANUAL
10	V2	1'-1"	5'-0"	9'-0"	VENT WITH 20MM MG BAR & 17X1" JALI ON BOTH SIDES

DINESH SHARMA
CHIEF ARCHITECT

U.S.NANDIWAL
SENIOR ARCHITECT

SANDEEP SARIN
DEPUTY ARCHITECT

DEVESH MATHUR
ASSISTANT ARCHITECT

TRACED BY: K.PRATAP
DEALT BY: CHECKED BY:

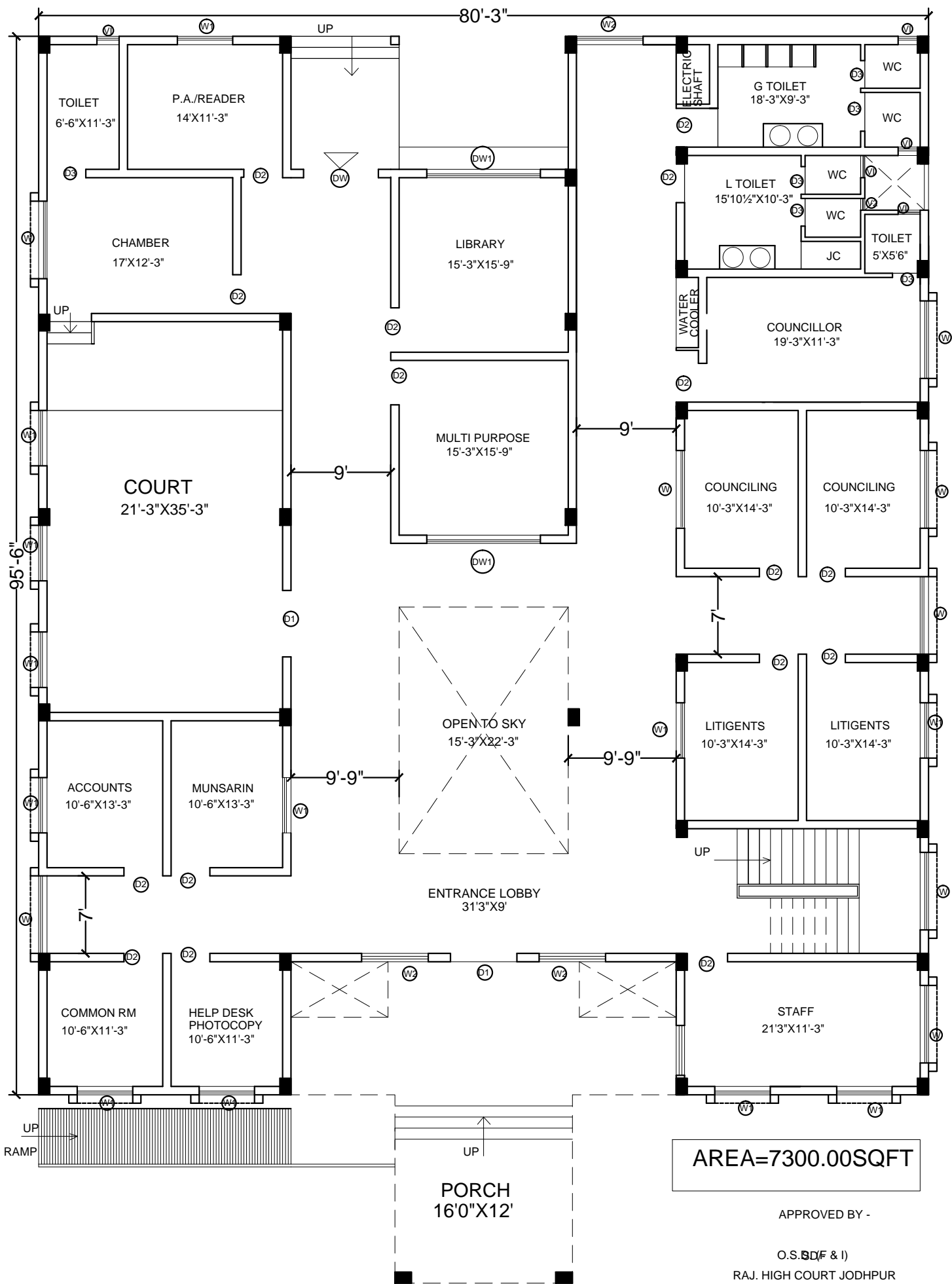
NAME OF PROJECT:
PROPOSED FAMILY COURT TD
IN RAJASTHAN

NAME OF DRAWING
GROUND FLOOR PLAN

PROJECT No. TD/J/1 DRAWING No.

DIRECTION: SCALE: DATE:
 N.T.S. 21.11.2016

PUBLIC WORKS DEPARTMENT
GOVT. OF RAJASTHAN, JAIPUR



AREA=7300.00SQFT

APPROVED BY -
O.S. SDF & I)
RAJ. HIGH COURT JODHPUR

VIDE LETTER NO. ACCTS/BLDG/BLUE PRINT/1084 DATED 19-11-2016